

Life of

This project starts with a love for animals and an exploratory eye to the strong social bonds build between wild creatures and the importance of these relationships. These social relationships between predatory creatures quickly prove to be just as strong and personal as our own social bonds. When it comes to animals in captivity just how much pain and torment do we cause them. Being inspired by the Netflix documentary 'Blackfish', I wanted to explore the cost that orca whales went through to be a days entertainment for us. This has lead to a collection that is a tribute to killer whales and acknowledgement that they should not be treated less than us.

BLACKFISH

ORCAS between animals

WILD BONDS

LIONS

PODS

Orcas are very social and live in groups called pods, which usually have up to 40 members, according to National Geographic.

PACKS

Wolves are social creatures that travel, hunt and perform all activities together. The pack is made up of family members, whether by blood or special ties.



A Mother's Love · A
Mother's Love ·
A Mother's L
A Mother's
Love · A
Mother's
Love
A Mothe
A Mother's
Love · A Mo-
ther's L-
ove
A Mo



WILD LOYALTIES

"ONLY ANIMALS THAT DIE AS A RESULT OF HEART BREAK"

Do they feel just as much as we do? - maybe even more? Information from the 'Blackfish' documentary could suggest that orcas have a part of their brain that could possibly lead to them feeling more intensely than us - therefore experience grief more dearly.

HUNT IN PACKS

WOLVES

KILLER WHALES

"Wolves of the sea"



The strength of a pack/pod can determine their ability to survive

SEAWORLD

Animals in captivity?

"They were in this dark metal, 20 foot by 30 foot pool for 2/3 of their life"

AND THEY THOUGHT THAT WAS OKAY??!

ABANDONED
KILLKUM

FOOD DEPRIVED



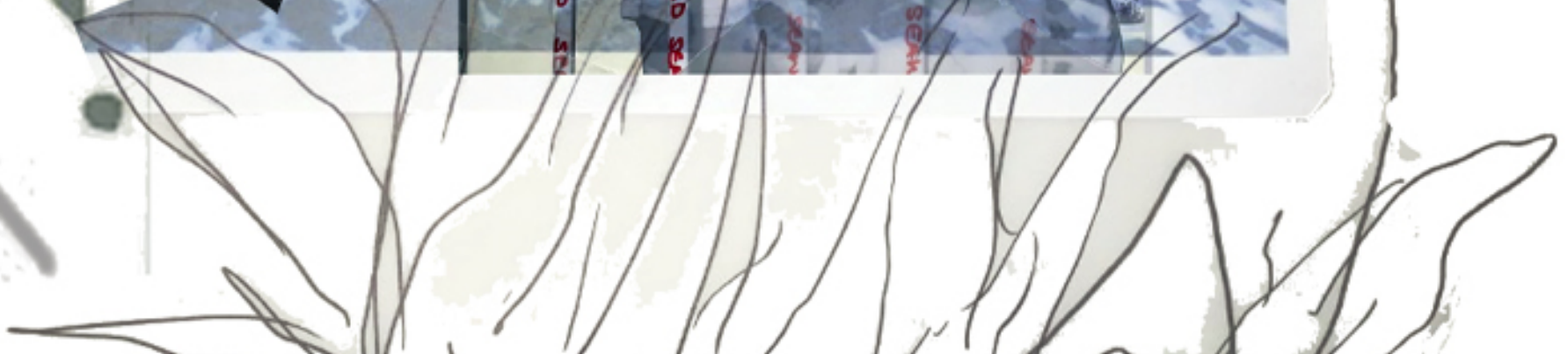
Young taken from FAMILIES

"Highly ELABORATE EMOTIONAL LIVES"

Is it ethical?



ARE THEY REALLY HAPPY??!!





initial design sketches and print development

mark making influenced by concept pages

GOLDEN EYES

Roaring
teeth
Big Cats
Whiskers



Collage work from
drape work



standwork draping
with garments and
material - stemming
ideas for details and
silhouette

Pleating

turtle shell pattern

refile

panels
belt
loops

tapered
leg

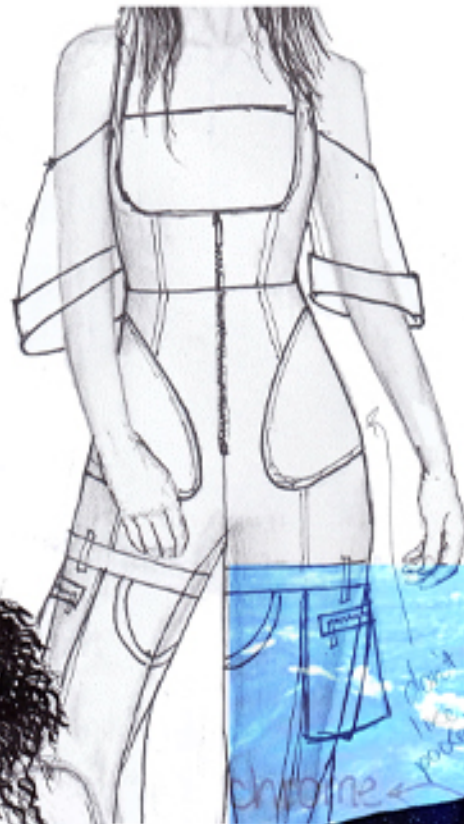
Bag/pockets.

Shorts.

fold/layers
& feature

KILLER WHALES / ORCAS.

Si then I ha



iridescent fabric - shine of water / sea



hood - ORCA TAIL



WALKED
KALIKUM
SEAWORLD

Young taken from
FAMILIES

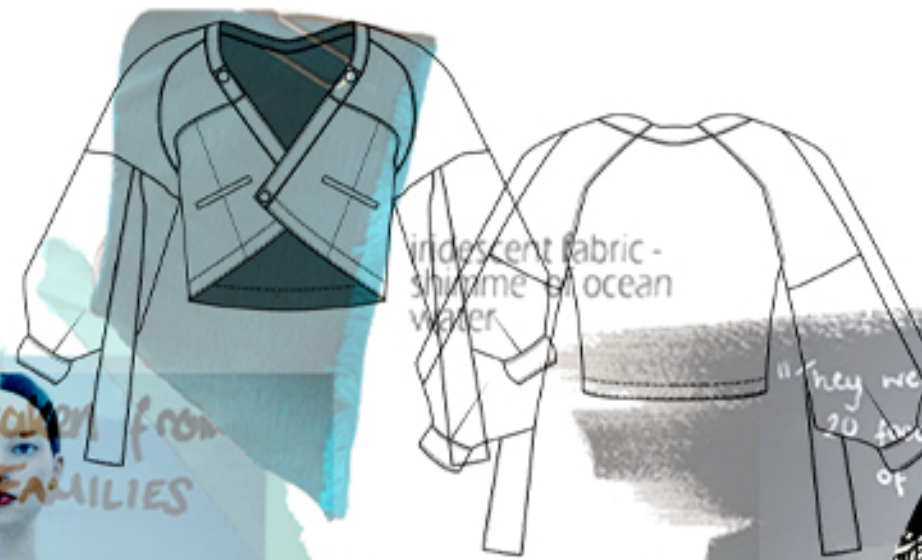
Is this right?

Stay with me
my love!

Mum, why
are they taking
us?

Is it ethical?

Young were taken from their
family groups for them to be
taken to captivity for the rest of
their lives.



iridescent fabric -
shimmer of ocean
water

Clo3D rendering

They were in the dark metal
20 feet by 30 feet pool for 21
of their lives



Blackfish Documentary
Seaworld
Captivity

KILLER

Since then
them on
from my
boat and
the

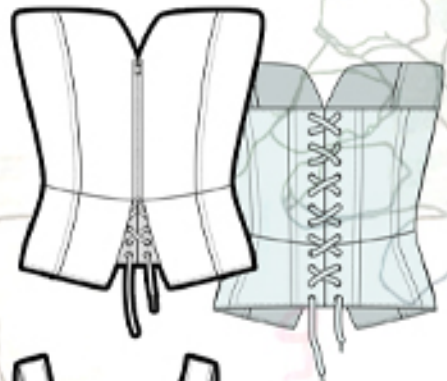
Wild social bonds



WILD LOYALTIES



WL-LOOK5-C



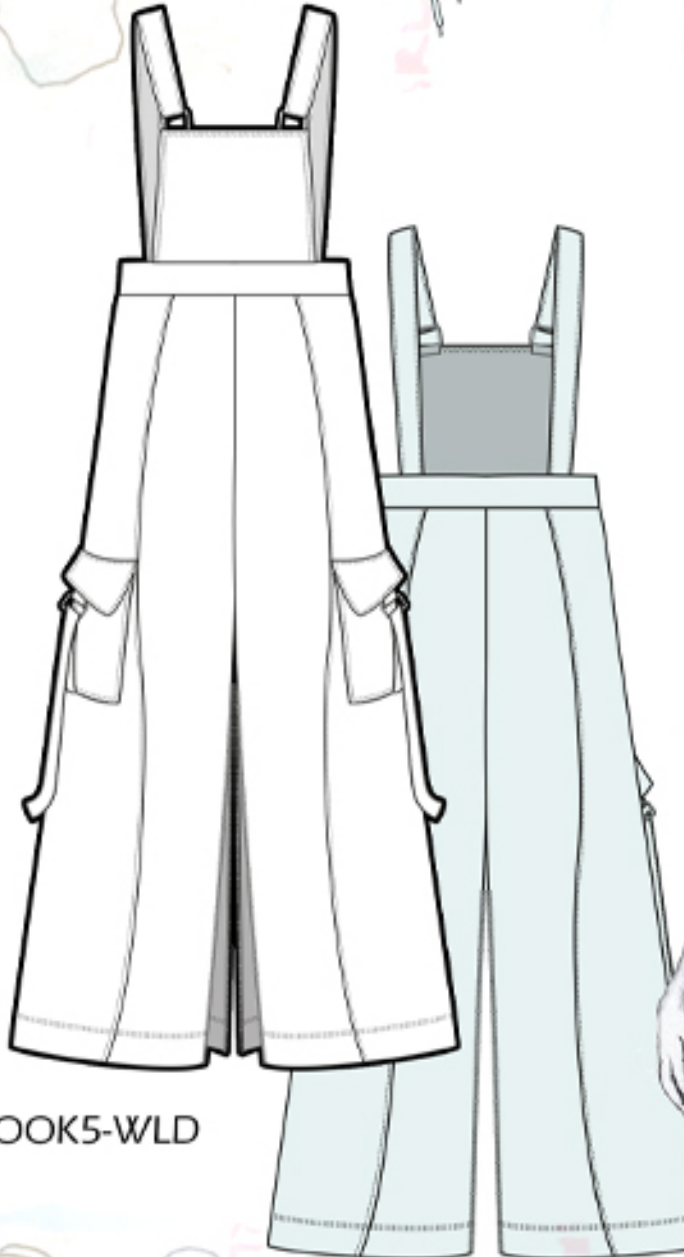
WL-LOOK6-CJ



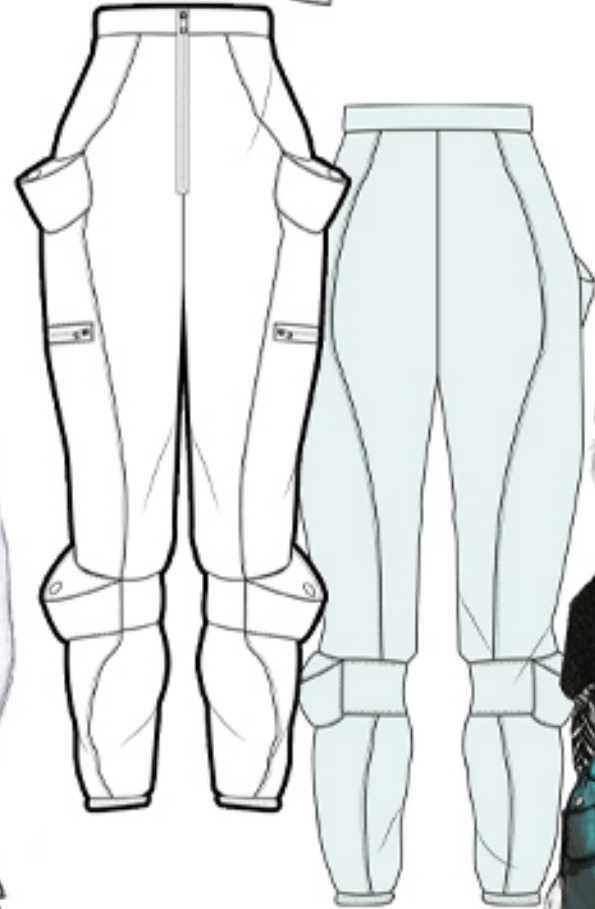
WL-LOOK4-JD



WL-LOOK5-WLD



WL-LOOK6-CT



WL-LOOK1-SLJ



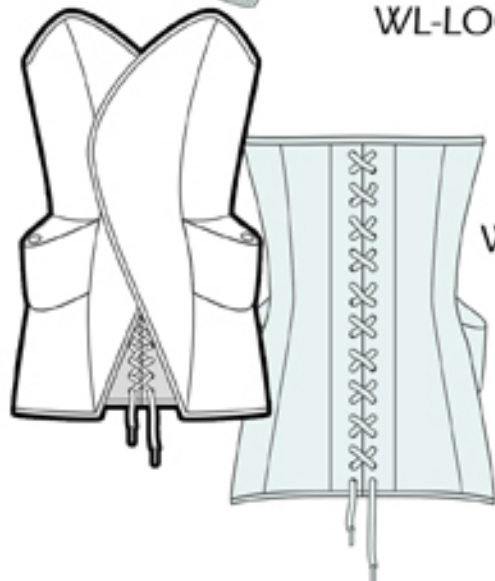
WL-LOOK2-CJ



WL-LOOK3-DJ



WL-LOOK1-TN

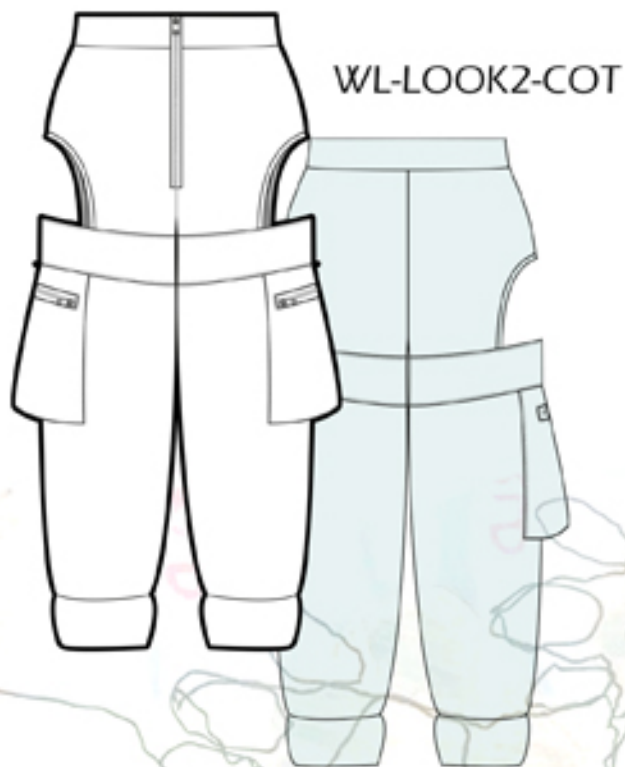


WL-LOOK2-PC

WL-LOOK3-MT



WL-LOOK1-LT



WL-LOOK2-COT



WL-LOOK3-TD



WILD REALITIES

Photography by: Josh Gates -
@jsgimagery