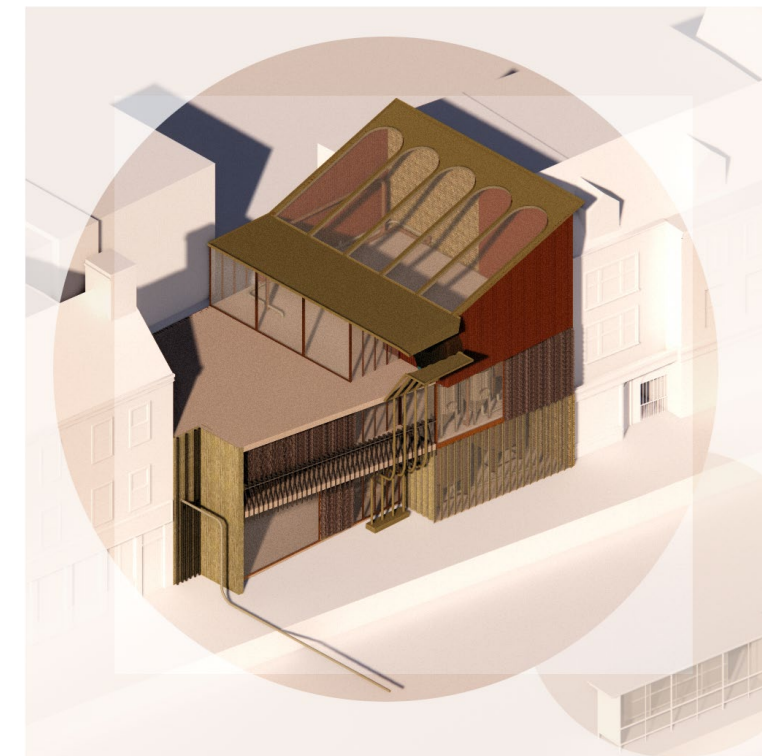
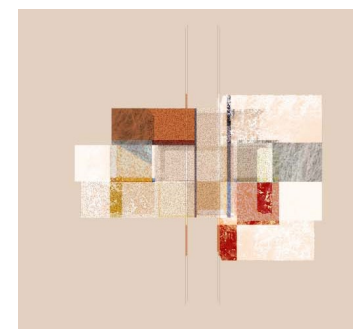
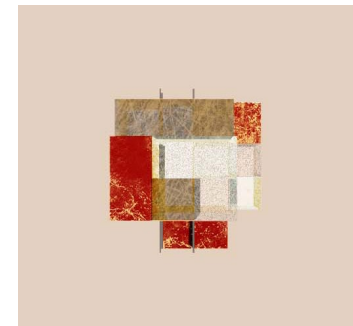
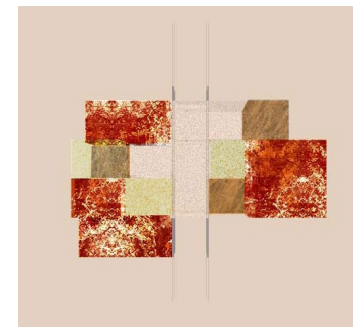
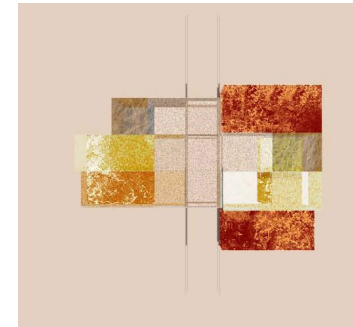


MASSING TEST : WEIGHT

Following the layout of the existing building I arranged the rooms by assigning them a weight in correlation to the water activity within the space. These weights then correlate to a material, for example, the heavier rooms will use charred timber and darker colours in order to create a heavier atmosphere.



DRAFT DESIGN | VISUALS

First initial design following on from massing tests with assigned room weights. Rain water features have also been designed on, for the roof and the balcony.