

RUIN BAR.

This proposal focuses on three key design drivers: history, atmosphere, and functionality, while exploring sustainability.

History

To show the **LEGACY** of the space, key historic areas have been highlighted with **LIGHTING**. In conjunction with this, the proposal focuses on the incorporation of the 'stamp moulds, cast iron bases' and the two brazing furnaces.

Atmosphere

Striving to attain a genial and stimulating atmosphere, different coloured lights have been used at varying heights, inviting the user's eyes to **EXPLORE** the space. This will help create a comparable atmosphere of **INTRIGUE**, as that found in ruin bars today.

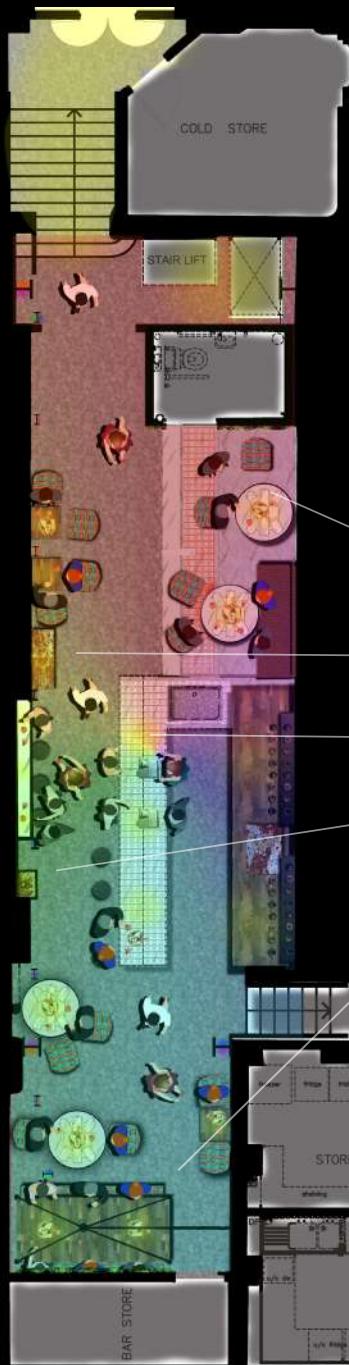
Functionality

Functionality is also a significant priority. Ensuring there is enough space to allow for non-ambulant **ACCESSIBILITY** was a high priority and proper routes to link the functioning areas of the space together have been studied. Contained is also the possibility of space to allow for **LIVE MUSIC**.

Sustainability

In regard to sustainability, we have provided suggestions of **LOCAL SUPPLIERS**, some who specialise in re-purposing of materials. This will not only aid the reduction of the carbon





Key Features...

Historical

The two remaining historical pieces (brazing furnaces) have been developed into a **BAR TABLE** using a glass surface and a base from the furnace [1], a **DISPLAY CABINET** [2] and a **DECORATIVE CENTRE PIECE** for the bar itself using the furnace oven [3].

Stamp moulds

To include the alabaster moulds into the design, they have been used to construct the **COUNTER** of the bar and encased in **EPOXY RESIN** to form the bar top [4]. By doing this the moulds will be showcased without compromising durability.

Area for live music

Wanting to incorporate a space for live music, a **LIFTING TABLE** has been designed for the space [5]. This table can be raised when the area is needed to create a **PERFORMANCE AREA**, coupled with a **PLANT WALL** that has been implemented to reduce external noise. The table design, when in the lowered configuration, is keyed into the wall to make it a large stable surface suitable for larger parties.



Stamp base tables and glass floor

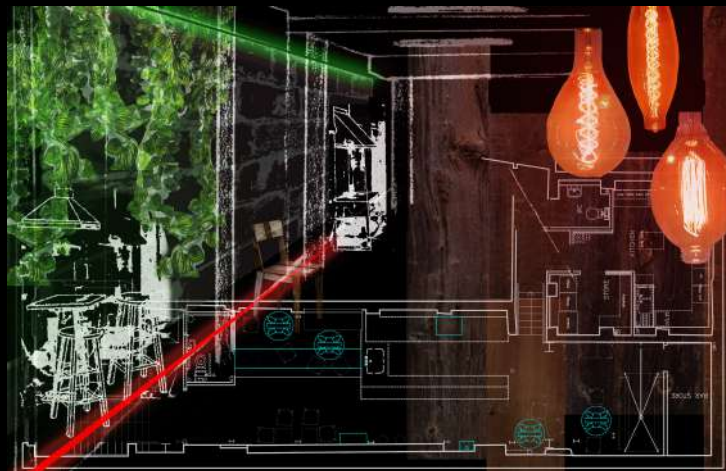
Display cabinet

Alabaster mould bar top

Re-purposed table (furnace)

Hanging table

Atmospheric Montage
In this montage we have compiled key elements of the design to show the **ATMOSPHERE** of the bar. To attain a genial and energizing atmosphere a mixture of coloured **LIGHTING** at different heights is a key element to the design. For this montage we have overlaid the lighting onto the plan, concept sketches, materials, and lighting styles.

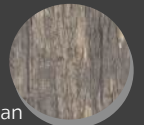


Sectional View

This section through the space shows the use of uplighting and vegetative decor to highlight the **CEILING** space and draw eyes **UPWARDS**.



Digwood Furniture
Birmingham
Chairs, Tables



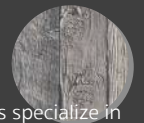
Digwood furniture is an independent company that specializes in re-purposing re-used furniture.



Glasscon
London
Glass Floor

The floor is silk printed to provide an anti-slip surface and the illumination is achieved by LED

Jericho Wood Shack
Sutton Coldfield
Wood (for bar)



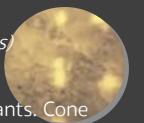
These two companies specialize in re-purposing, re-used wood.



Reclaimed Timbers
Birmingham
Wood (for bar)

These two companies specialize in re-purposing, re-used wood.

Christopher Wray
London (Historical ties)
Pendant Lighting



Bar suspension pendants. Cone shaped metal shades with industrial detail, complete with frosted glass diffusers.

A key consideration for this project was to source **LOCAL** and **SUSTAINABLE** materials. We believe this will further enrich the **HISTORY** of this site. Here listed are some possible sources for the materials we have used in our design.