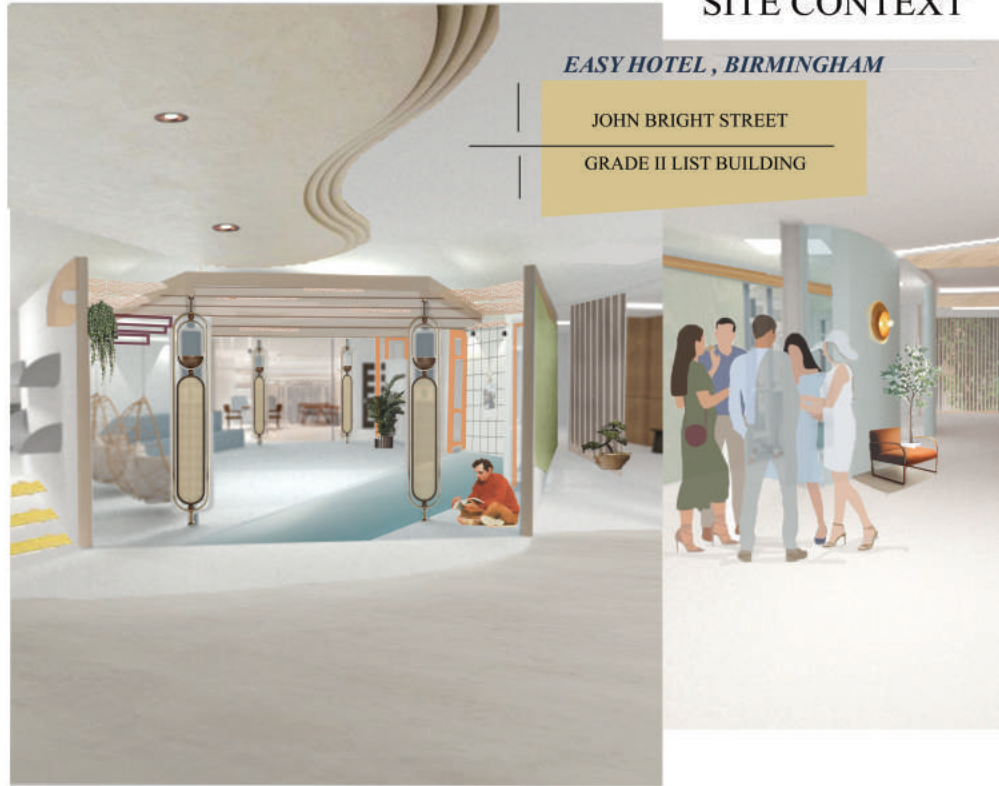


“ LIVING UP THE HUB ”

SITE CONTEXT

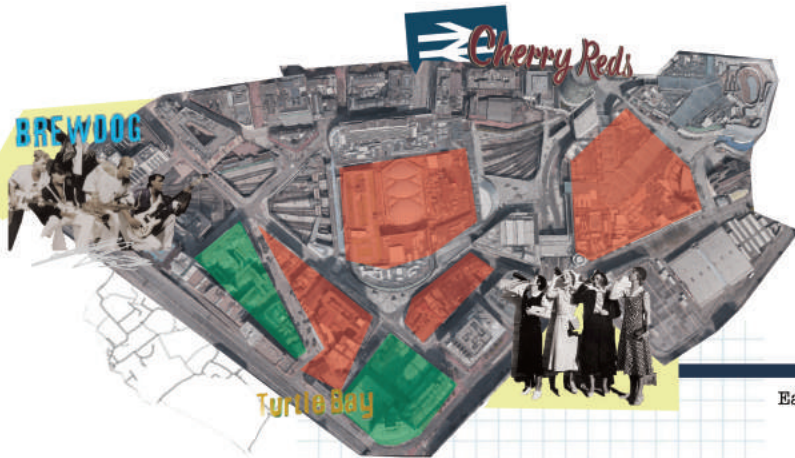
CO- WORKING SPACE

This place welcoming all different people mix & mingle , chill out , catch up and socialize which is the energy in the building. The mood is combining some gentle and delicate pattern. For achieving the concept of Co- Working space which focus on the Japanese aesthetic sensibility design. Division of porosity is materialized into the physical and spatial implications of two kinds of voids: “ Natured ” space and the design of living up the hub. Things that effective in attracting people is dynamic pattern to show the shade effect from summer.



EASY HOTEL , BIRMINGHAM

JOHN BRIGHT STREET
GRADE II LIST BUILDING



Activity density in Birmingham City Centre

- Medium
- High Dense

Current Bar Hub Street

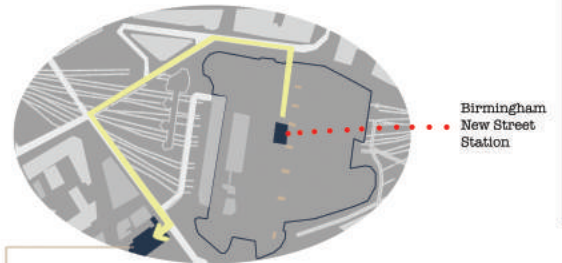
Surround with couple of restaurants such as The Stable, Turtle Bay.

The Victoria Pub, one of the popular Bitters& Twisted group offering a relaxed environment with art on the walls, having quickly become a very cool hang out.

What type of living there?

Many of the other buildings have been knocked about and fire-damaged. However, things are looking up in the area, with some trendy new bars like Brewdog, Cherry Red's and the Victoria opening, a neat pedestrianisation scheme, and the prospect of the new New Street Gateway opening out this way.

John Bright Street, right between the Arcadian, Chinese Quarter & Gay Quater. It is at the centre of everything. A permanent street party with a great vibe hang out place.



Easy Hotel, Birmingham

Train

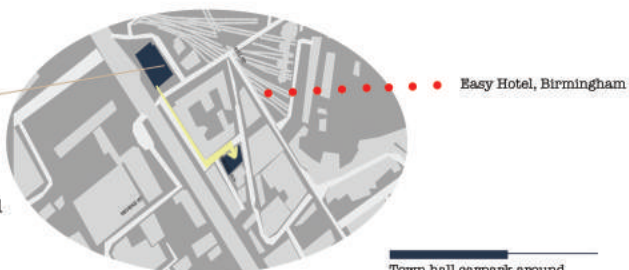
Train station connects to all UK cities. Few minutes walk from Easy Hotel.



Easy Hotel, Birmingham

Bus

Regular bus services around the city , 15 minutes walk away on coach station.



O Town Hall Car Park

Car

Town hall carpark around 3 minutes walk and it was 24 hours multistorey car park.

INFRASTRUCTURE

CONCEPT

SEEKING LINGERING MIST AND SWINGING TAIL

DEVELOP TO PATTERN

MICROSEASON
INSPIRED FROM JAPAN

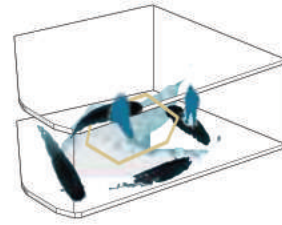
Japan's ancient calendar, which is divided into 24 seasons, and 72 microseasons. A bunch of poetic information like the seasonal word, fish, star, vegetable and activity was synchronize.

BEGINING OF SUMMER

Natural element from the microseason of Japan which is fish. Taken out the shape show the lightweight nature and summer sensibility would be the consideration. The link to nature brings fresh and energy to building.

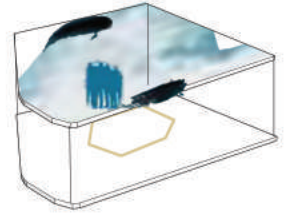
**L I F E
B L O O M S
& E B B S**

AWAKENING



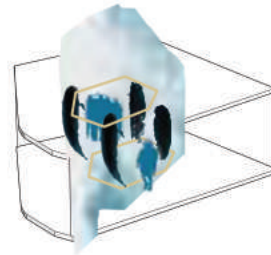
Seating arrangement

Customizable furniture according to comfort and style



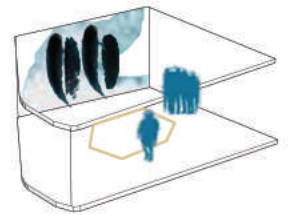
Ceiling design

Circular corridor creating infinite sight line and different perspective



Column Design

By initiate a social connection which compels one to go with the productive flow.



Wall panel design

Different panel pattern design is powerful tool creating a different mood.

SPATIAL PROGRAMMING

What I want to achieve in space?

Direct interaction

50 people

Second Floor

- Coexistence private & public spaces where users can focus and mingle.

Indirect interaction

50 people

First Floor

- Pod creating infinite sight lines and different perspective.

Direct interaction

100 people

Upper Ground Floor

- Common Activity
- Open plan for spontaneous interaction outside.

Keys:
Each floor allocates washroom, stairs and lifts.
Reception is on Lower Ground Floor.

Second Floor

- Office necessaries room
- Office
- Washroom
- Sleeping cabin
- Lounge

First Floor

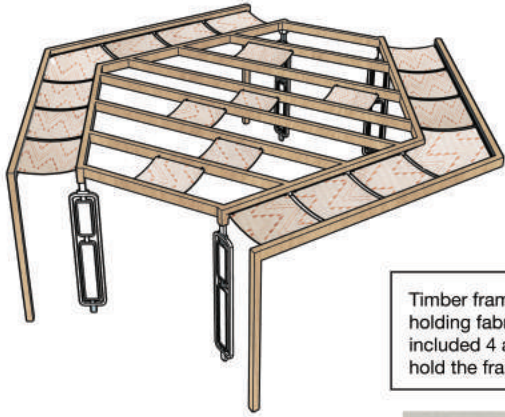
- Individual hub
- Meeting room
- Chill area
- Dinning area
- Washroom

Upper Ground Floor

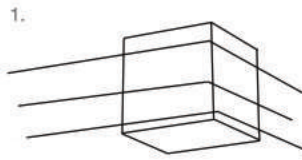
- Food bar
- Social hub
- Easy accesible stairs and lift
- Event space

Isometric drawing

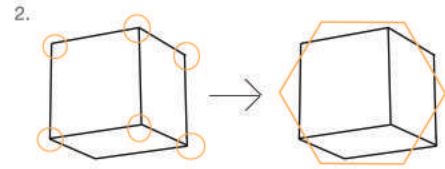
ELEMENT



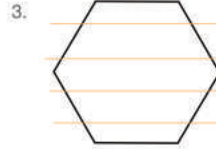
Timber frame structure with holding fabric. The installation included 4 acrylic plastic to hold the frame.



1. Square form of Japanese lantern design and clean lines.



2. From the six point get out hexagon shape.

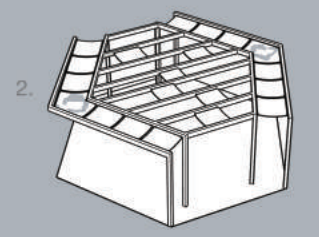


3. Get the clean lines in timber frame design is out.

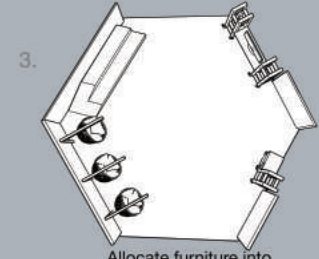
Development of element



1. Developed the layout and the internal design element

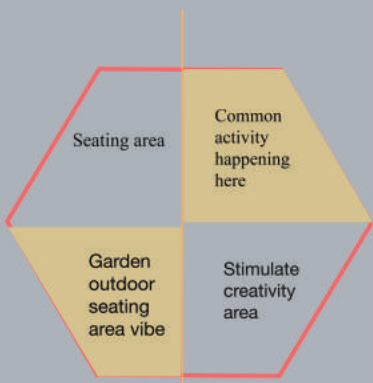


2. Colourful fabric stretched around timber frames.



3. Allocate furniture into the space

Activities 'happen' in the hub



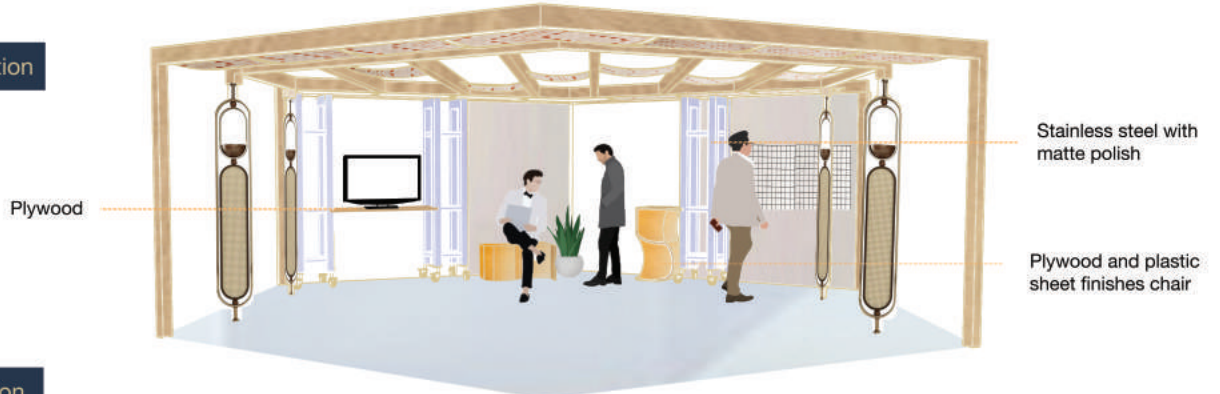
Indirect interaction Direct interaction

Divide left and right area for different activities.

The ambiguous spaces that leave room for imagination to the way various areas connect with and influence one another.



Right elevation



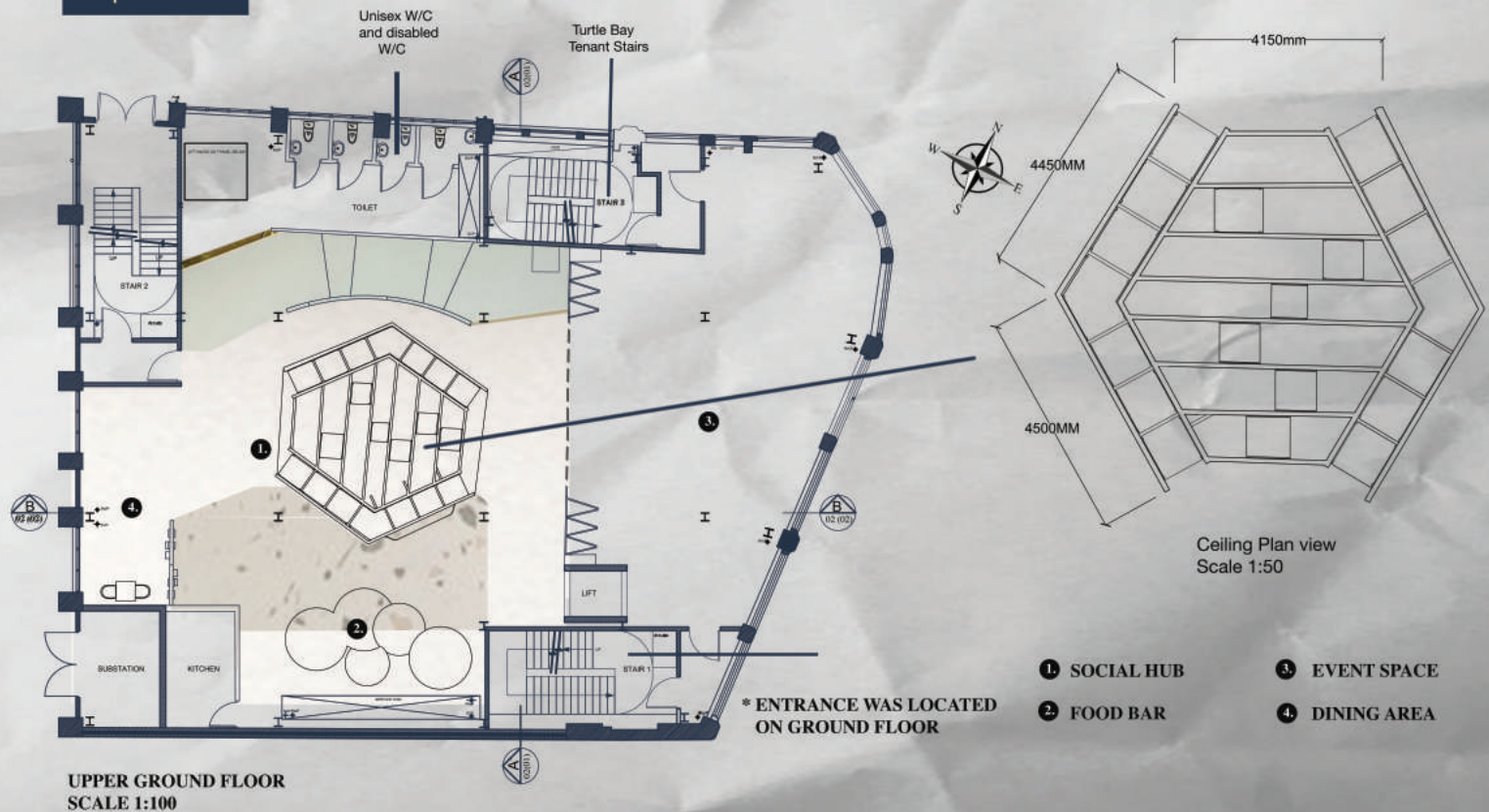
Left elevation



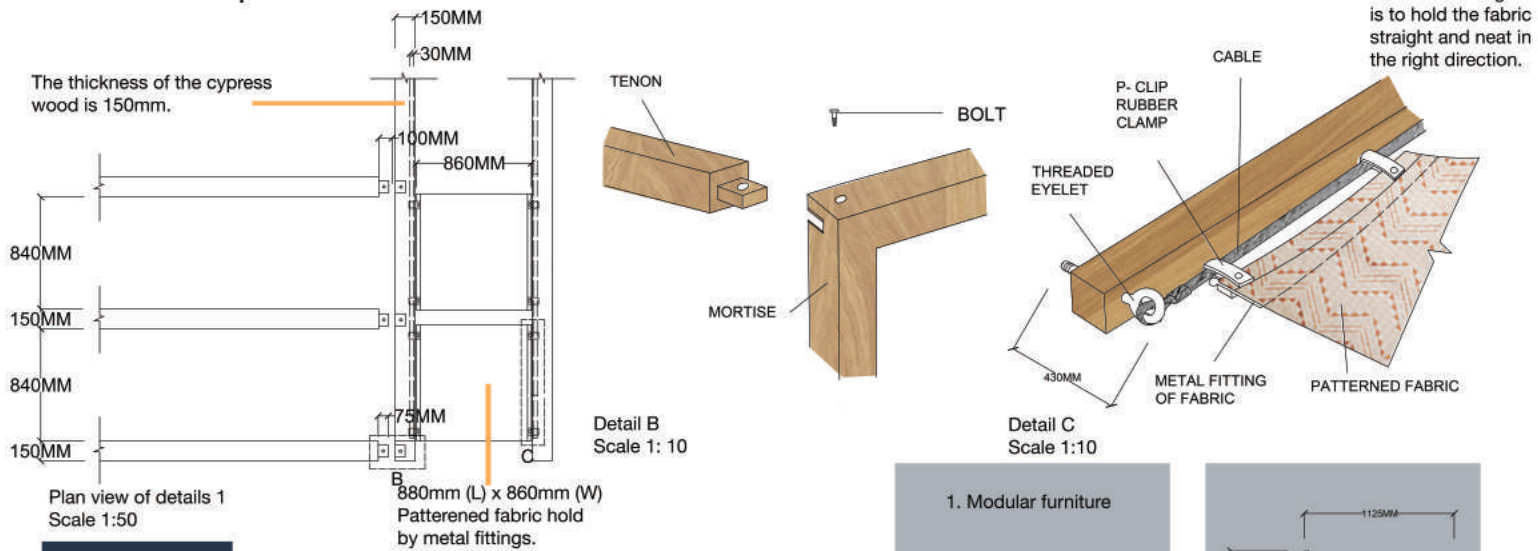
Perspective view

Perspective view

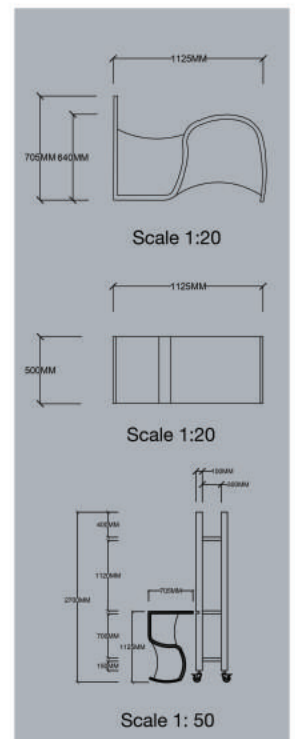
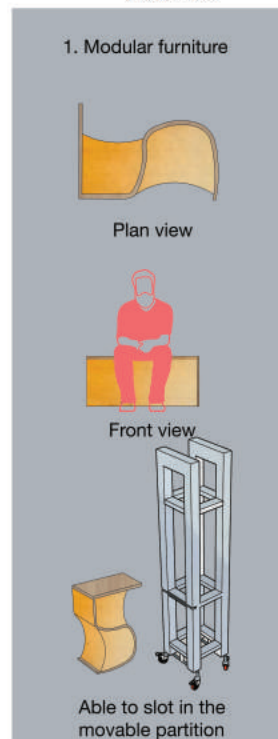
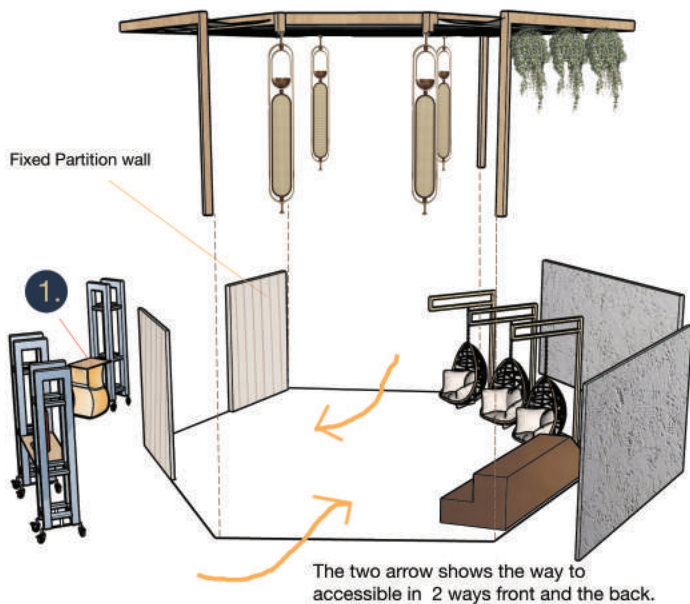
Proposal Plan



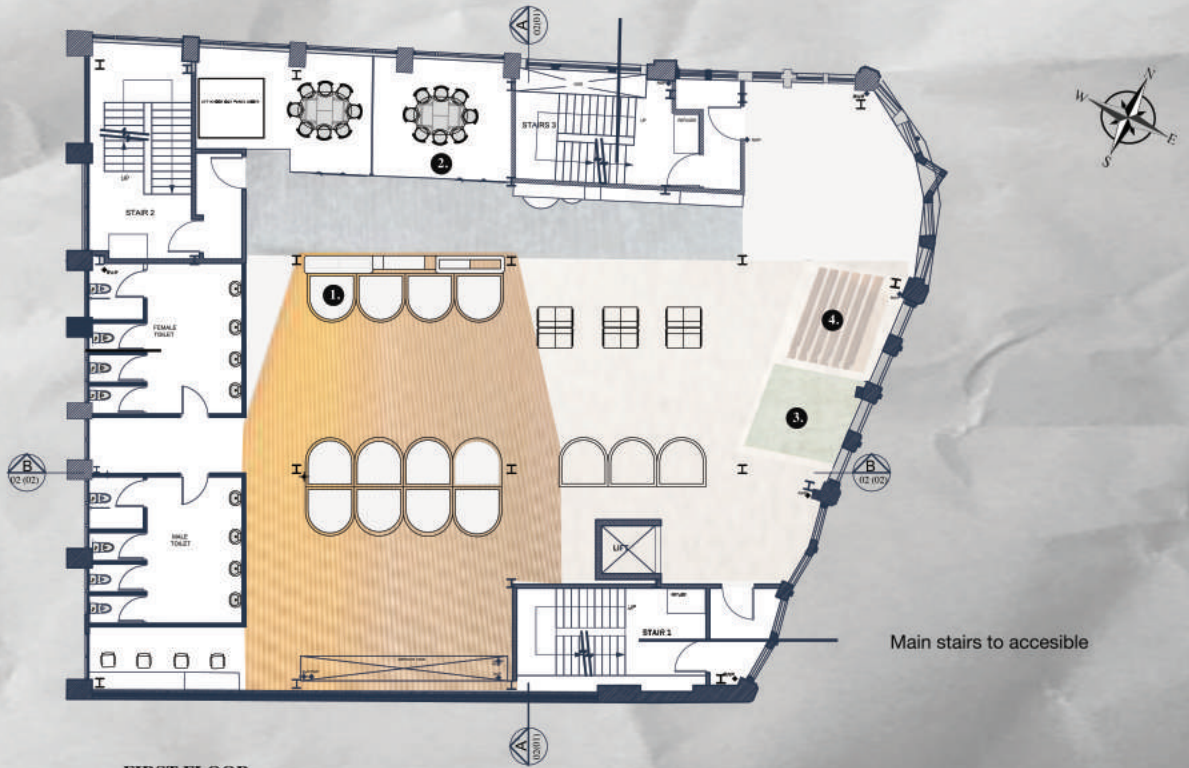
It was a close up details of the timber frame.



Exploded view



Proposal Plan



FIRST FLOOR
SCALE 1:100

- 1. INDIVIDUAL POD
- 2. MEETING SPACE
- 3. WELLNESS ROOM
- 4. COFFEE DOCK



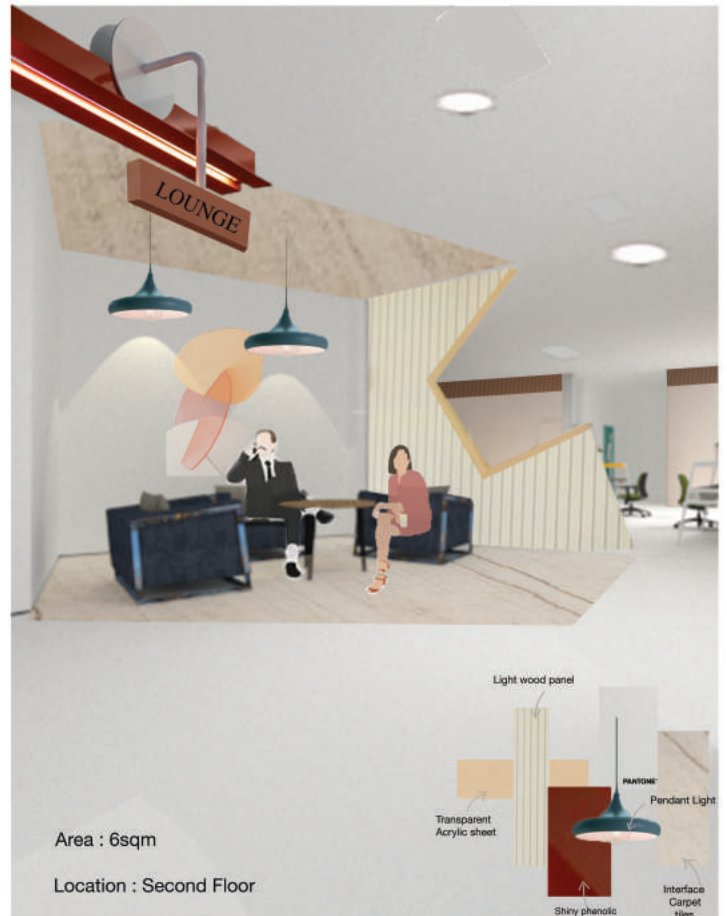
Second Floor Plan
Scale 1:100

- 1. COWORKING AREA
- 2. LOUNGE
- 3. SLEEPING CABIN
- 4. OFFICE NECESSITIES ROOM

Office

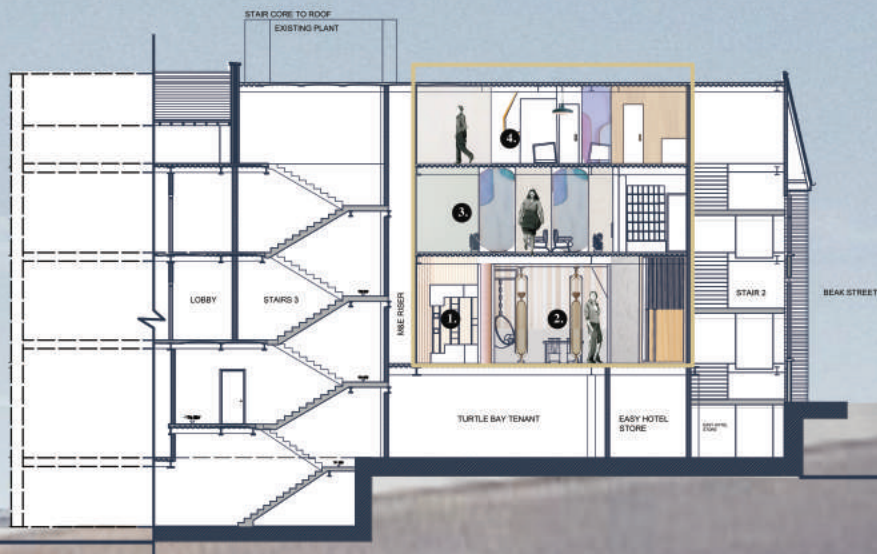


Lounge



Professional networking opportunity to share space with the people who are enthusiastic with same topic. The link to nature enhances the feeling of tranquility and proven by experts to stimulate productivity and positive thinking. Our body mind need to be positive so going green helps the circulation of air in building.

Several theme of private to public lounge using different colour palette and material to differentiate the zone. Here they would be willing to know people in the same community and promote communication between each other. The value is in the warmth colour from selection accents to up the energy levels.



SECTION A-A'
SCALE 1:100

Social Hub

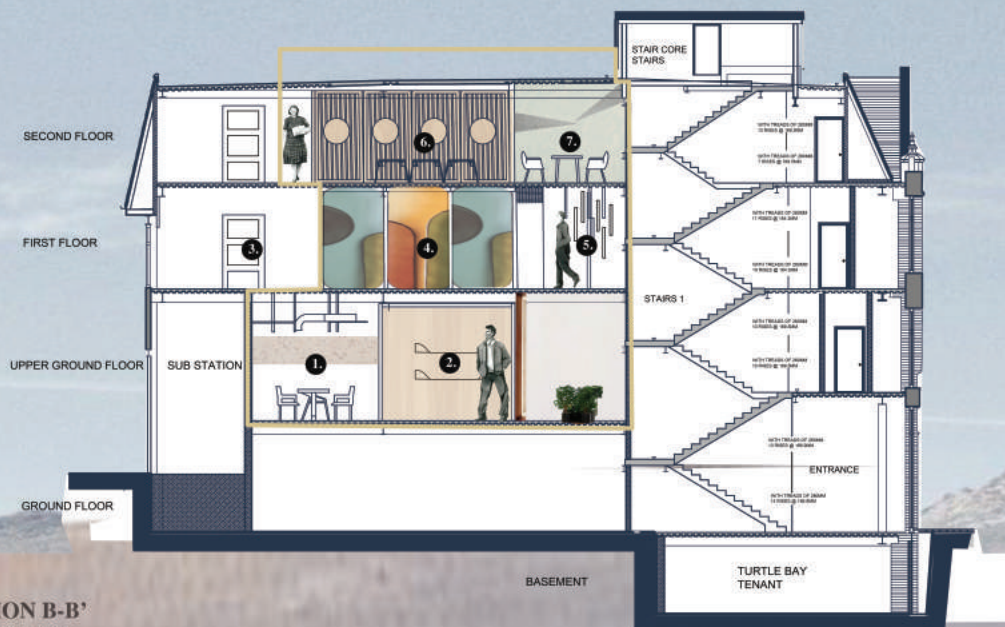


This place welcoming all different people mix & mingle , chill out , catch up and socialize which is the energy in the building. The mood is combining some gentle and delicate pattern. Things that effective in attracting people is dynamic pattern to show the shade effect from summer.

Food Bar



As to achieve high quality more productive with improve opportunity here get some food bar provide basically grab and go. Contemporary Japanese culture replicate in this space .The space occupy amount of people so the noise level would be increase , different hanging wood pattern is to show the variety of pattern and act as acoustic panel. Improve user mental health.



- 1. Dining Area
- 3. Toilet
- 5. Meeting Room
- 7. Lounge
- 2. Social Hub
- 4. Individual Hub
- 6. Office

Individual Hub & Chill Area



Up to first floor from the poetic element journey. Individual pod is designed to perform for user have the private space. A combination of chill area outside the hub when user is get tired of the situation can release stress. Basically the whole mood is engaging fresh brainology with 'me' time.



Hallway , Upper Ground Floor