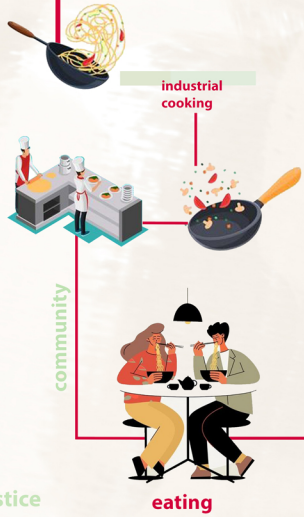


THE GREEN KITCHEN SYSTEMS DIAGRAM

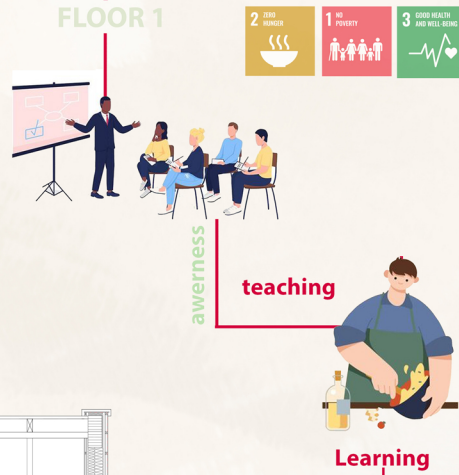
FLOOR 0



#2 The unjust Floor 1:-

From my site analysis I have identified that the majority of spaces within Bordesley Green are corner shops and takeaways where people get their foods from. Our studio project is to create a proposal of care and my approach to that is through food care and nutrition. The available food consumption spaces are unhealthy food dominant which results in a lot of health condition such as cardiovascular diseases, therefore Floor 1 is aimed to educate people about food healthy and nutritious by providing a workshop kitchen for people to learn how to cook and produce healthy diets as well as aware of not just the wider community but the wider world through SDGs

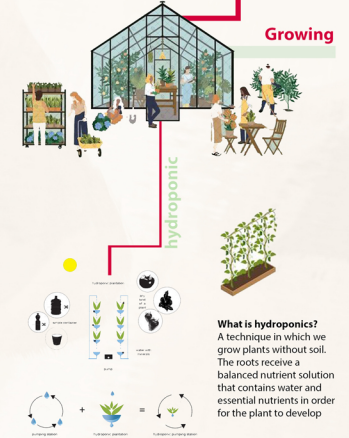
FLOOR 1



3 SHARED RESOURCES

The Green Kitchen helps reduce CO2 emissions as the goods do not need to travel long distances due to the site producing food which will reduce the demand and overall help economically, socially and environmentally.

FLOOR 2



#1 The unjust Floor 0:-

Bordesley green has a lack of wider community spaces available to the public where people can spend time to bring the community together. Public spaces such as cafes and restaurants or even a social space is an atmosphere for people to bond and create a stronger community. The available spaces are quite limited in terms of community spaces and those are spaces such as mosques, churches and parks. They may be restricted spaces based on age difference, religion and culture which may limit people to come together.

1 PUBLIC SPACE

#3 The unjust Floor 2:-

The 3rd injustice is the availability of locally sourced food within the site. Now more than ever the price of food is extremely high making it difficult for people to buy fruits and vegetables. From my site analysis research I have identified that there is an allotment within Bordesley Green that works really well in terms of connecting the community and growing food. The demand for fruit and vegetables is really high and due to the prices increasing rapidly it puts local communities into a pressure therefore having a locally sourced food production within the site helps the wider community.

