

SUSTAINABILITY, CONSERVATION AND HERITAGE



HERITAGE PRESERVATION

Although the site is not listed, the surrounding buildings have rounded windows, which is a prominent feature of Jewellery Quarter. This is something that is mimicked in the redesign of the site. This has great historical relevance to the site and its former glory.

FUNCTIONS BENEFITTING THE LOCAL AREA

Local areas have an extensive range of bars and entertainment in the area, as well as restaurants and takeaways. To benefit the local businesses, the design does not feature a hot food kitchen, in order to save on waste of food and wasted heat energy, as well as encourage local exploration.

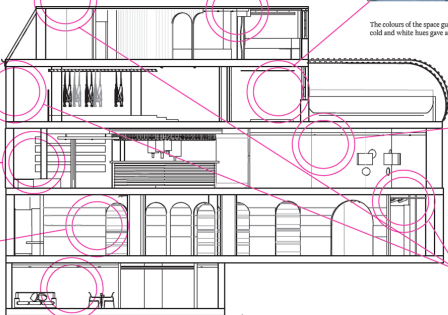


DETAILS AND SYMBOLS

Throughout the antique buildings, upon entrance and windows, much detail can be observed. This is usually carved into stone, or in older times, into wood. These are usually listed buildings and have significant historical relevance to the local area. These curves also inspired the layout and the concept of the design.

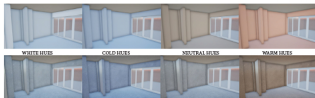
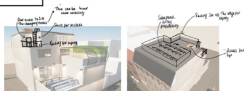
PAYING HOMAGE

The previous residents of the building were the Vegan Society. They teach about philosophy and ways of living without animal cruelty in food, clothing etc. The new design will pay homage to them by using vegan fabrics and materials, as well as focusing on healthy vegan foods.



FLEXIBILITY

All of the floors have the opportunity to transform into different use spaces. For example, the yoga room can be used for massages, meditation room, chiropractic, or even group gatherings for people with difficulties for sensory play, or children to get familiar with sand play.



COLOURS AND HUES

The colours of the space guide the feel and look of the space. The Neutral Tones seem the most fitting as the cold and white hues gave a feel of a cold and rigid space, whereas warm hues appear too busy to allow users to relax whilst visiting.



MATERIALS

Inspired by the Jewellery Quarter buildings and its historical buildings, stone and texture dominate the area. The oldest buildings, such as the Assay Office feature stone, which seem to indicate importance and status of the JQ.

SUSTAINABILITY AT THE CORE

The building now has six additional windows, with a larger area of glass print, allowing more natural light in, reducing the need for artificial light. The skylight on G floor provides light and ventilation naturally, depending on the weather, and also a newly built terrace, which maximises the space of the building, and created additional footprint, to accommodate more people, without having to waste much building material for an extension. The roof has the ability to house solar panels to produce energy, with a space for a ladder for easy access, as shown. This will lead directly to one of the small changing rooms, which can be remodelled to be a plant/ roof access.

